

Alcatel 4610 II

Voice Mail Box

User guide



Ref. : 3BR 05683 AAAA Ed. 2A

© Alcatel 1997 - All rights reserved

Alcatel reserves the right to modify product characteristics without notice, in order to conform with the new standard or to improve product performance.

Alcatel Headquarters: 12, rue de la Baume - 75008 Paris France
S.A. ou capital de 734 001 100F - R.C.S. Paris B 602 033 185




Alcatel Business Systems
52 - 56 avenue Jean Jaurès
92707 Colombes Cedex - France
Tel. : 33 1 55 66 70 00
Fax : 33 1 55 66 43 38

How does it work ?

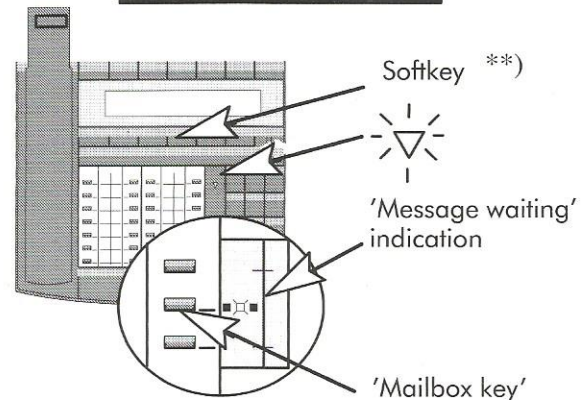
I was created as a standard mailbox. To personalise me please open me and I will ask you to enter your password and to record your name.

PRO HINTS

Following keys have specific functions:

-  is used to:
 - cancel your input
 - go back to the previous menu.
-  is used to:
 - confirm an input
 - skip an announcement or an input.
-  is used to:
 - listen to more options of a menu.

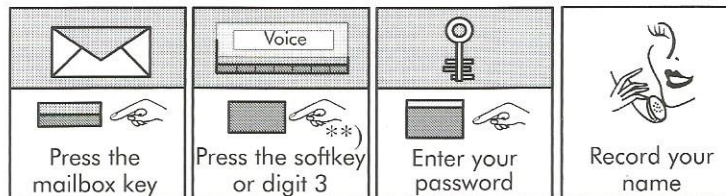
Please note the following features on your set:



EVERY START

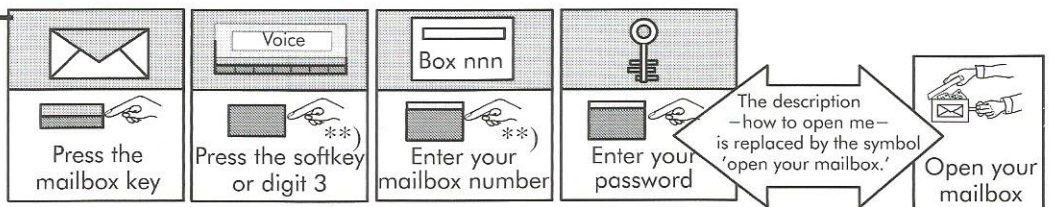
Every start is ...

easy. The 'message waiting' indication is turned on, when I was installed. This helps to locate your 'mailbox key'. When you open me for the first time follow my instructions.



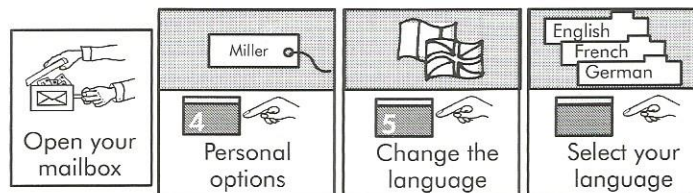
How to open me your mailbox

Afterwards, when 'message waiting' indication is off, you can open me as follows:



The language ...*)

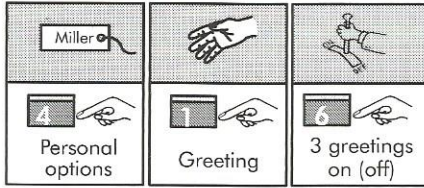
is English. To choose another language, please press:



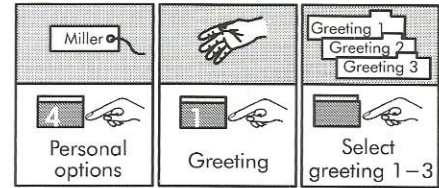
*) Not generally available

**) Only in specific systems

3 greetings on



Select your greeting



PRO HINTS

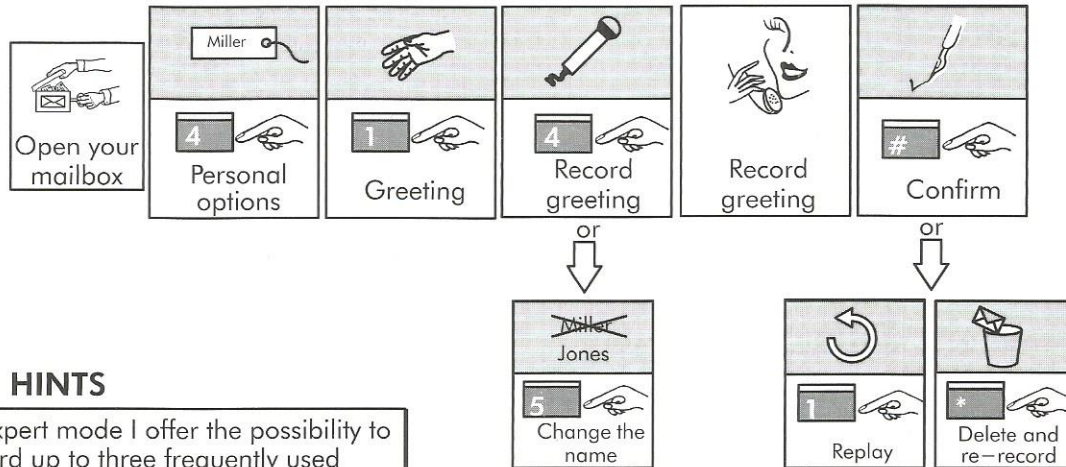
Every caller listens to your personal greeting. Therefore please change your greeting as often as required. The following examples can be modified according to your personal usage:

- 'Hello, this is the mailbox of (name) I am out of the office until . . o'clock. Please leave a personal message. I'll return your call within 4 hours. If you need assistance, press 0 now.'
- "Hello you have reached the personal mailbox of (name) Today you can reach me in the office again at o'clock. In urgent cases you can reach me at (tel. number). Also my colleague (name), at extension. . . . will be happy to help you. If you prefer to leave a message, please do so now.'
- 'Hello, this is the mailbox of (name) I am on leave until the However you can leave me a message, containing your name and telephone number and I will call you on my return. Thank you.'

WHEN YOU LEAVE

WHEN YOU LEAVE

How do you want to welcome callers ?



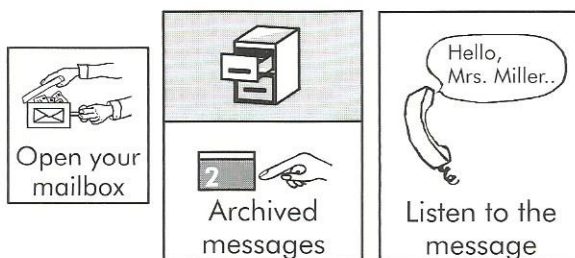
PRO HINTS

In expert mode I offer the possibility to record up to three frequently used greetings and to select between them.

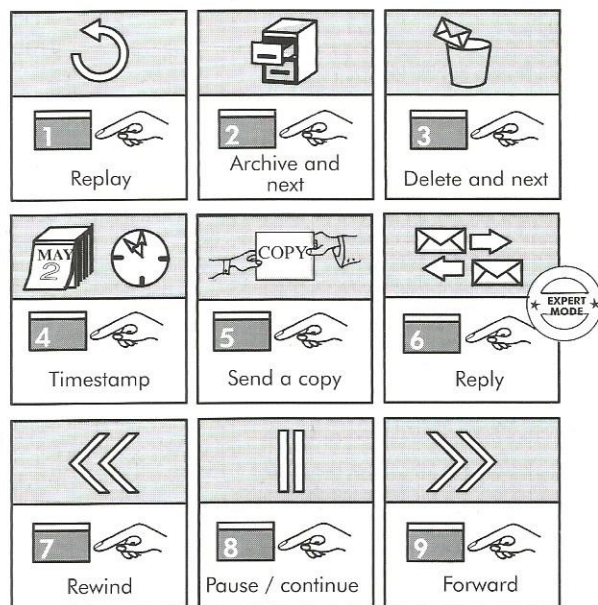


This functionality is a system option

I have archived messages for you



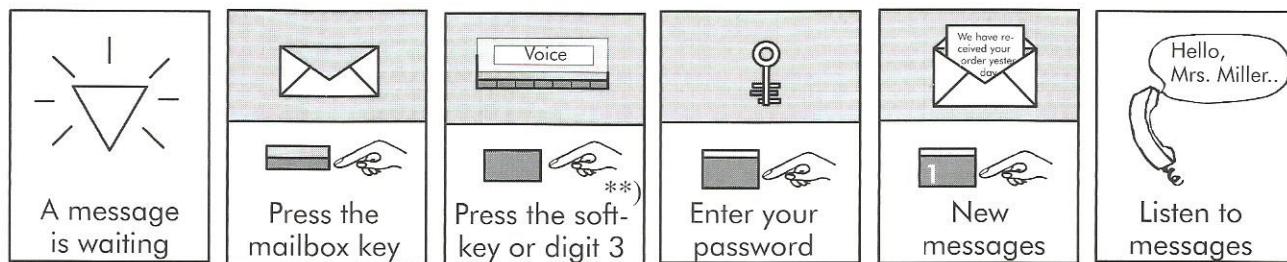
When you listen to your message,
you can ...



COMING
BACK

COMING
BACK

Hello, I have a message for you



How does it work ?

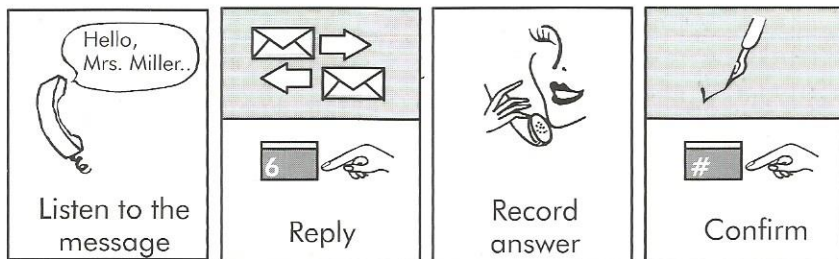
I switch on the message waiting indication to inform you on new messages.

Please consult your mailbox immediately and answer the messages. People will appreciate your fast response.

Please delete messages, which are no longer used, to be able to store new, important messages.

**) Only in specific systems

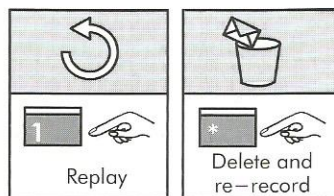
Reply to a message



How does it work ?

You can immediately reply to your message. The sender receives your message in his mailbox.

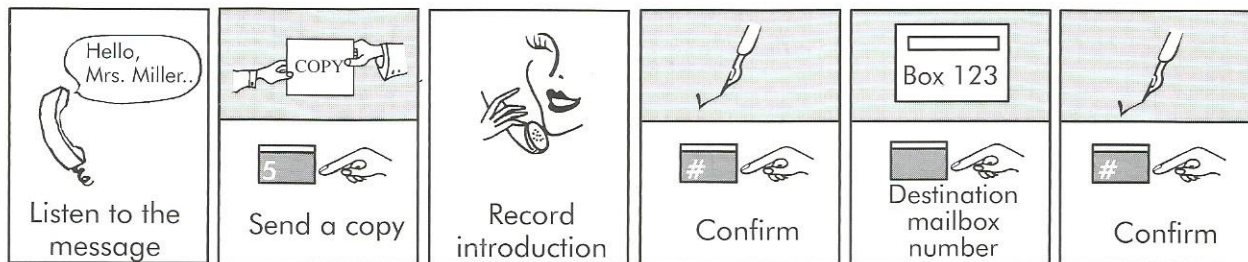
or



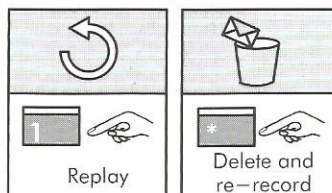
COPY/
REPLY

COPY/
REPLY

Sending a copy of your message



or



How does it work ?


Some of your messages are also of interest for other people. You can send a copy of your message to one or more colleagues. Record a short introduction, so that the recipient knows that it is forwarded from you.

How does it work?

You can leave someone a message when you don't want to interrupt him, by depositing it directly in his mailbox without calling his telephone set. This option can also be used via the public exchange. Call the system as described in the menu 'remote consultation' and then select 'send a message'.

Optional feature



When you don't know the mailbox number you can spell the name of the mailbox owner. Press the  key and enter the first characters of the family name using the letters on the dialling key-pad or the picture beneath. If there are several names in the directory matching with your input, the system will either offer a selection or ask you to enter more characters.

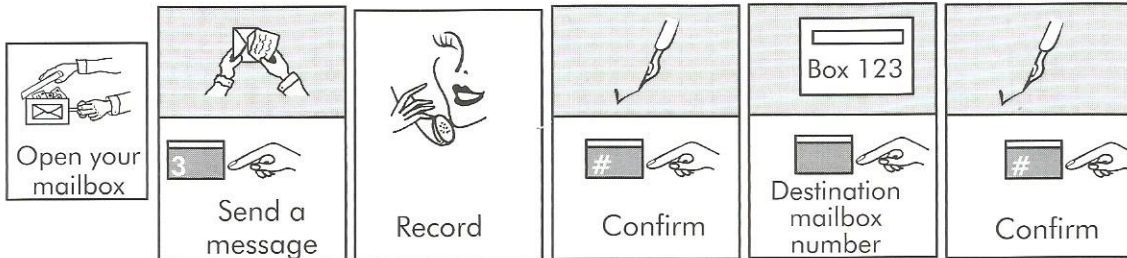
Example: For "Jones" please enter # 5 0 6 3 7.

1	ABC	DEF
2		
3		
GHI	JKL	MN
4	5	6
PRS	TUV	WXY
7	8	9
★	OQZ	#
	0	

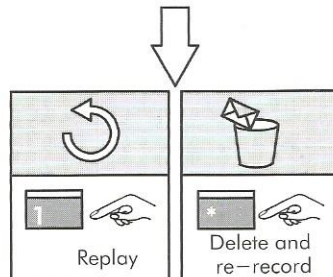
SEND A
MESSAGE

SEND A
MESSAGE

How to send a message



or



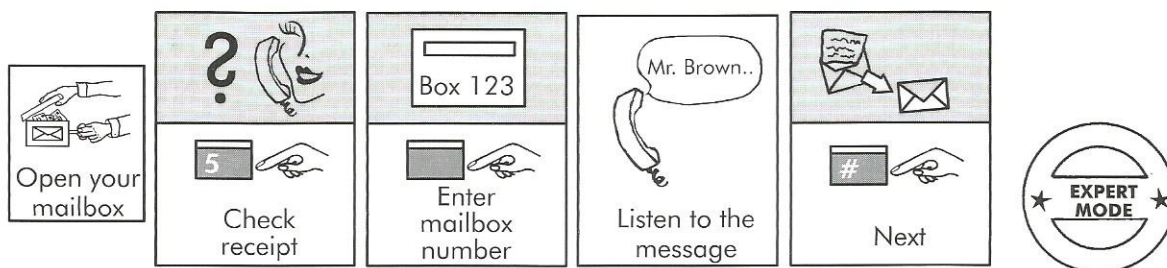
PRO HINTS

You can send a message to a:

- Destination mailbox number enter the number of another mailbox.
- Distribution list number the numbers are 001, 002 up to 050.
- Broadcast number dial 000 to broadcast a message to all mailboxes of the system.



How to check the receipt of a message



How does it work ?

You can check whether the sent message has been heard by the recipient. Messages not heard will be re-played to you.

DISTRIBUTION/
RECEIPT

DISTRIBUTION/
RECEIPT

How to create a distribution list

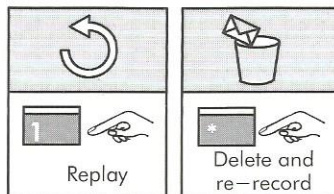


How does it work ?

You can send a message to a number of persons defined by you, using a distribution list. The system allocates automatically, in addition to the name of your list, a 3-digits list number. Enter this number instead of a mailbox number.

Before you create a new list, press  to get information about existing lists or to change lists created by you.

or
↓



or
↓

Continue entering further mailbox numbers.

How does it work ?

You can have me call you:

- at home, at the hotel,
- via the mobile telephone,
- or at your pager.

I need the telephone number where I shall call you and the time from when – until when I can reach you.

If you are not answering the phone, I will repeat the call twice. (Not in case of a call to a pager). When you are in your office, please inform me by simply switching off notification.

Where?

0 4610 4610			
3	Enter telephone number	#	Confirm

PRO HINTS

Enter the access code for the trunk line first before you enter the telephone number.

If I should call your pager, enter 1# (or 2#) followed by the subscriber's pager number.

When you don't know the access code or you need details about the paging system, your system administrator can help you.

WHERE TO
CALL YOU

WHERE TO
CALL YOU

Where and when can I call you ?



Miller		
4	2	On
Personal options	Notification settings	Off

How does it work ?

When notification is activated, I call you immediately, after I have received a message. You can also define a time range, when you want to be called.

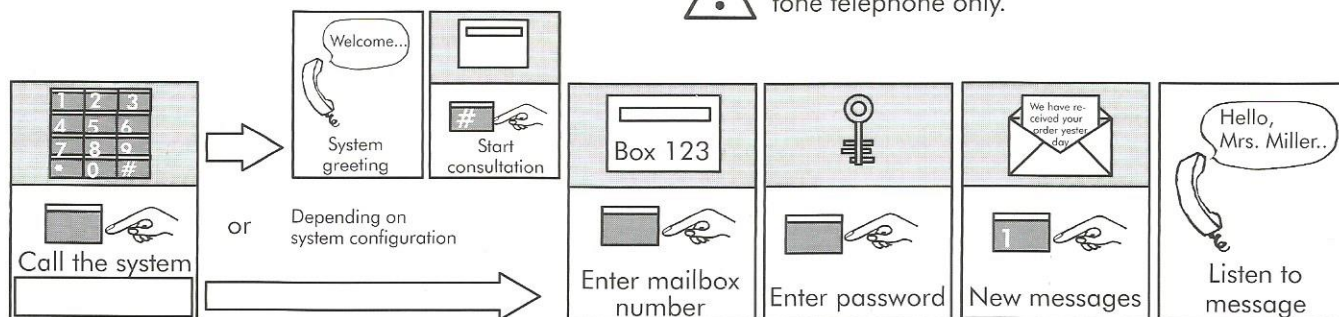
When?

	HOURS/MINUTES 09:00	HOURS/MINUTES 17:00		
4	Enter begin	Enter end	#	Confirm

Remote consultation



Please use a touch tone telephone only.



PRO HINTS

Check for new messages at least twice a day. Answer messages immediately. People will appreciate your fast response.

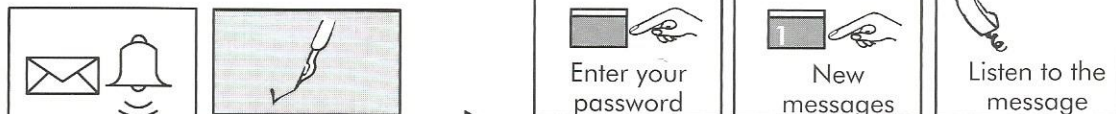
All options, indicated in 'coming back', are available during remote consultation.

REMOTE CONSULTATION

REMOTE CONSULTATION

Hello, new messages have arrived

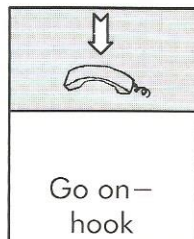
Consult me immediately



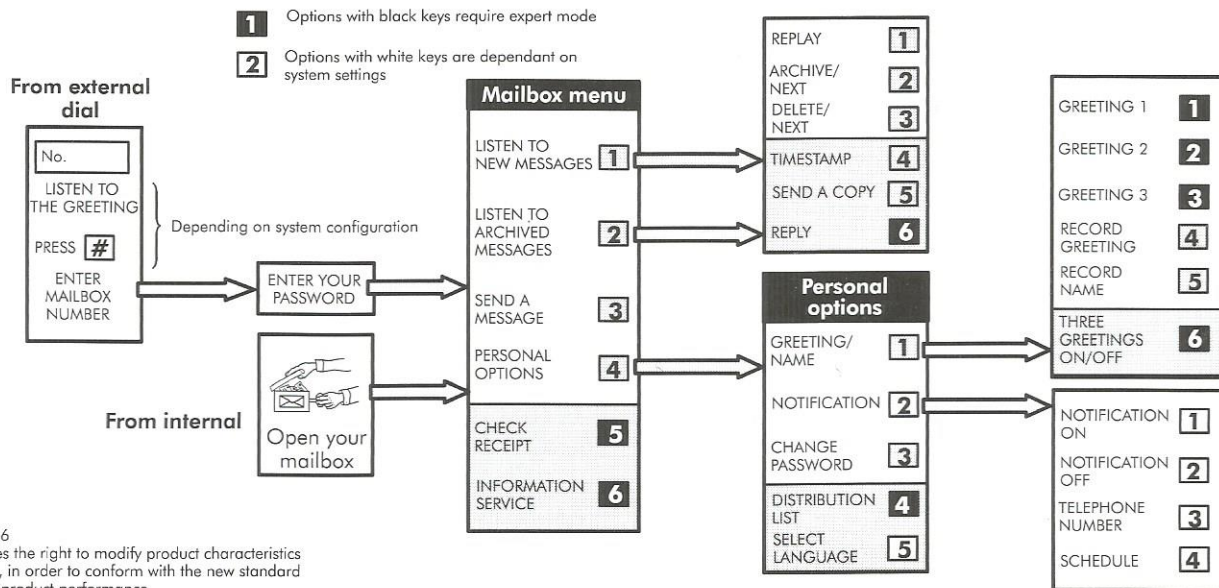
Note:

The system administrator has to enable 'immediate consultation' for your mailbox.

or consult me later




(Continue with 'Remote consultation')



© Alcatel 1996
 Alcatel reserves the right to modify product characteristics without notice, in order to conform with the new standard or to improve product performance.

Alcatel 4200 Office Communicator Rel.1.1
 3BR 05683 AAAA Ed. 2A

 These menu options are announced when you press 0

Alcatel Business Systems
52 – 56 avenue Jean Jaurès
92707 Colombes Cedex – France

Tel. : 33 1 55 66 70 00
Fax : 33 1 55 66 43 38

Alcatel Headquarters: 12, rue de la Baume – 75008 Paris France
S.A. au capital de 734 001 100F – R.C.S. Paris B 602 033 185

Alcatel reserves the right to modify product characteristics without notice,
in order to conform with the new standard or to improve product perfor-
mance.

© Alcatel 1997 – All rights reserved

Ref. : 3BR 05683 AAAA Ed. 2A